

Essential Safety Features: Car DVD Players

If you're in the market for a new car and you can afford a fully-loaded top-end model with all the bells and whistles, that's great. But for the average Joe (or Jane), the price is a consideration and it's difficult to sift through all the jargon car salesmen confuse you with. So, what are the essential safety features in cars that prevent accidents? Which new auto technologies are pure gimmicks and which ones save lives? Here are some essential safety features your car should have.

Airbags



Even the least expensive cars these days have at least two front airbags. In the event of high-speed or high-impact collisions, airbags are only second to seat belts in saving the lives of front seat passengers. The latest auto

technologies include airbags that deploy on the windscreen of the car to protect a pedestrian who may get hit while crossing the street.

Back-Up Camera

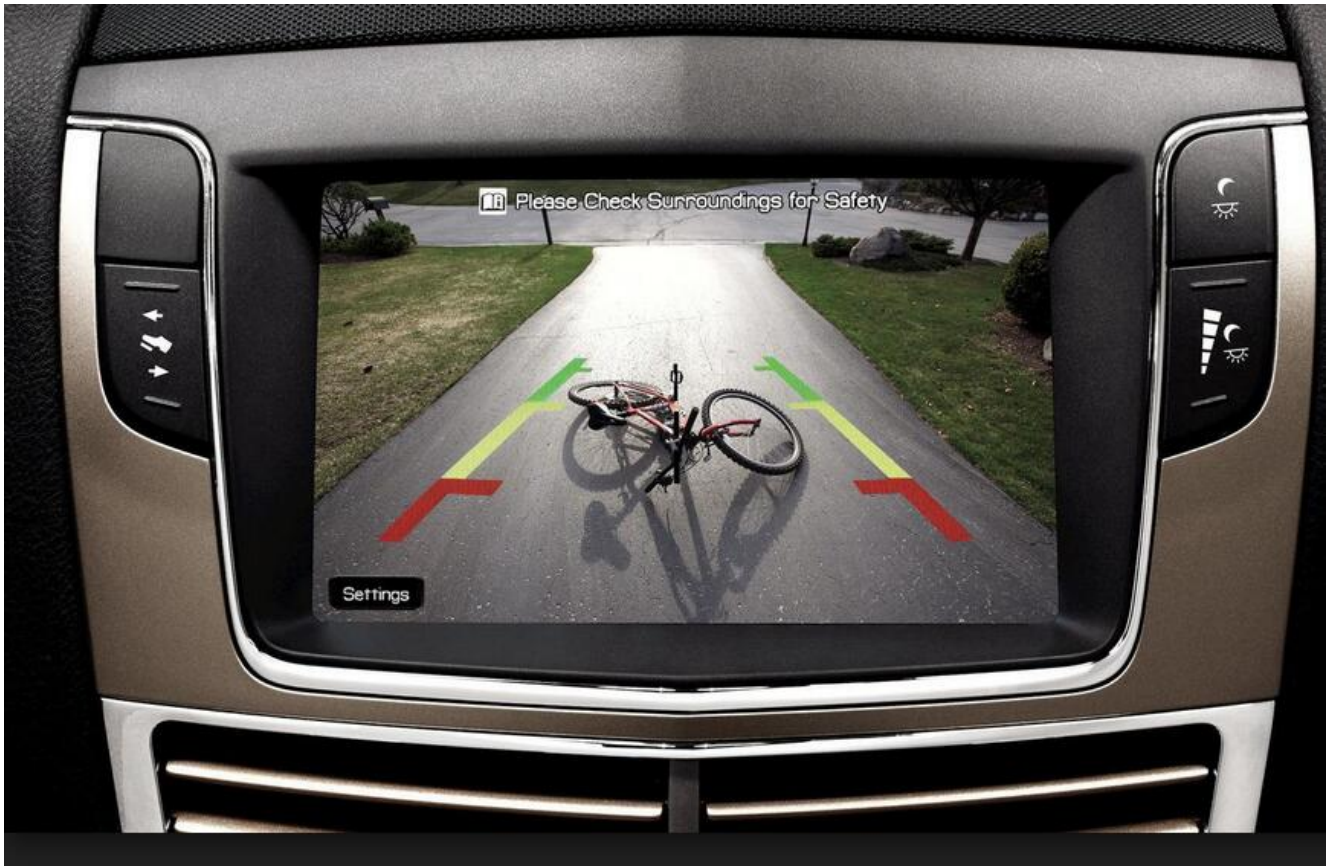
A dashboard display of what's behind the vehicle comes on as soon as you put your car in reverse. Some back-up cameras include trajectory lines and distance readings to help you navigate, but more importantly, this technology prevents you from inadvertently running someone over (there have been instances when a parent backed up a large SUV over their own toddler in their own driveway). The National Highway Transportation Safety Administration (NHTSA) will make back-up cameras compulsory in all vehicles by 2018.

Fatigue

Detection

Systems





Drivers drifting off to speed are a danger to themselves as well as others on the road. New car technologies detect erratic driving, such as sudden deceleration or drifting, and warn the driver with an audio or visual alert. This safety feature is especially important for people who spend long hours on the road alone, such as truck drivers. More expensive models in passenger cars are able to profile a driver's normal driving patterns and quickly detect any deviation from the baseline, even factoring in external factors such as road surface and crosswinds.

Parental Controls

Parents of teen drivers can rest a little easier when their young driver heads out of the door with car keys in hand. Parental control technology for safety in automobiles allows parents to place limits on the vehicle's speed and audio volume. The system can also be programmed to sound a continuous alarm if seat belts remain unfastened after the vehicle begins moving. GPS vehicle tracking allows parents to

track the vehicle in real time.

Blind Spot Detector

If you've ever started to switch lanes but jerked back into your lane because a car was in your blind spot, you'll know the value of a new technology called blind spot detector. This feature sets off an audio or visual alert if there's a car in the driver's blind spot. Some systems can also detect bicycles and pedestrians outside the driver's field of vision.

Car DVD Players:



Nowadays, there isn't a home without a [car DVD player](#), but one of the latest and coolest ways to electronically enhance your life is installing one into your car! Car DVD players come in all different varieties and prices, but even the cheapest ones will send you into movie viewer heaven!

View more products at our global online store:
<http://www.autopumpkin.com/>

UK store: <http://www.autopumpkin.co.uk>

DE store: <http://www.autopumpkin.de/>

[Tips On Installing Android BMW Navigation System DVD Player](#)

More and more BMW X5 E53 owners prefer to upgrading the factory car stereo with an aftermarket one which has DVD player and GPS navigation system built-in, such as [Pumpkin Android BMW navigation dvd, wince 6.0 BMW navigation car dvd](#). And some of these people would like to install the new replacement by themselves, but there may be some problems during installation if you have never installed an aftermarket car gps dvd palyer before. We write this post to introduce you some tips on installation of Pumpkin [android 5.1 BMW Car Navigation GPS DVD Player](#).

If your BMW X5 e53 just comes with factory car radio and CD player in dash, there's a plastic cage inside of the dashboard as you can see after you take out the factory radio and CD, if you don't remove this cage, you may think it does not fit into the opening of the original entry, the new BMW navigation dvd unit can not be pushed entirely into the dashboard, see pics below:



Don't worry, there are two methods which can allow you to push the new BMW X5 navigation car dvd into the dashboard fully. Some installers just cut the plastic cage, and others remove it.

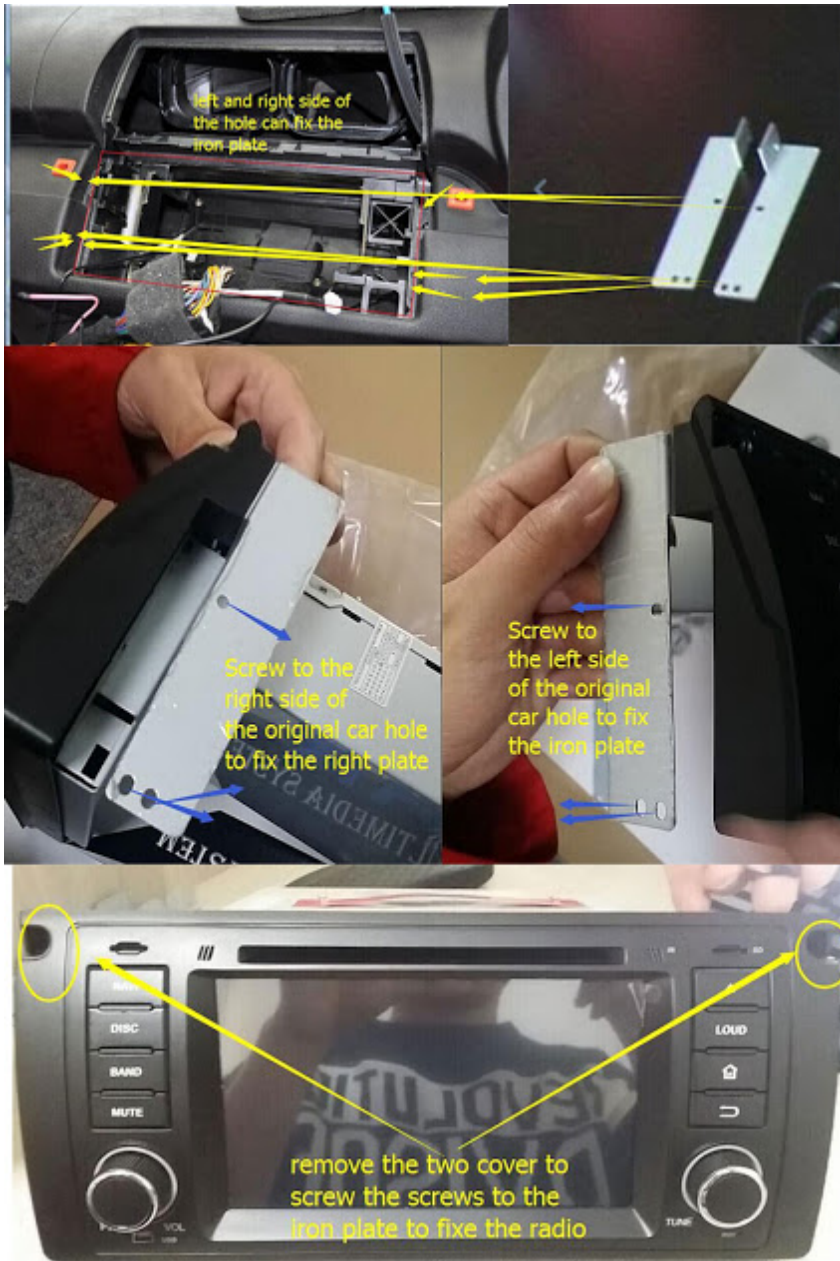
In order to remove the plastic cage, firstly take off the 4 screws that hold the cage in place, 2 on the right side, and 2 on the left side (same as right side). The following pictures are for your reference:





You need to pull down and slightly left the dash part which is close to the steering wheel. When you are doing this, use your other hand to push down in the middle of the opening where the cage is, and as you opened/pulled the dash/trim this far, you are able to hold it with one hand in this position and start wiggling the cage with your other hand. When are doing this, some force is necessary, but not too much. Once you start playing with it, you will get the jest on how to pull out the hooks, then as you have the left hook out, you now pull to a side and down on the right side (glove compartment side) to clear the other hook.

Once you removed the plastic cage, you are able to push into the new unit into the dash fully. And you will need to use the included iron frame support to fix the new unit to the dash, you may check the following photo as reference.



If your BMW X5 E53 comes with factory navigation system, there's a large screen in the dash, the 17pins(before year 2002) or 40pins(after year 2002) plug is not at the back of your factory radio, it's located under the trunk, so you need to use a 5m long power cable with 17pins or 40pins plug to connect the correct plug under the trunk.



The following video may help you about that!

Click to check [Pumpkin BMW Car Navigation DVD Players](#).

Click to check [Pumpkin Android 5.1 BMW car GPS DVD palyer](#).

Pumpkin official websites:

US site: www.autopumpkin.com

UK site: www.autopumpkin.co.uk

German site: www.autopumpkin.de

[How to Install an Auto Overhead DVD Player](#)

You want to make travel time more enjoyable for you and your little ones, so you decided on an entertainment system. Deciding to install an overhead DVD system can be rewarding in the long run, but complex in the beginning. A novice can complete this type of project, but some experience in this subject will make the process go more quickly. Either way you will save installation cost. You may also be able to seek installation support through the company you purchased the system from. Take your time and it will pay off on those long family travel trips.

Decide where you want to place the overhead DVD system. Determine the best position for everyone in the rear to easily see the DVD screen. You may need to remove your dome light.

Outline the bracket that came with the [2 Din Android Car DVD GPS](#) on the headliner of your vehicle where you decided to place the overhead DVD player. Make sure the outline is centered from both sides of the vehicle.

Partially drop the headliner of the vehicle. Only one side of the headliner needs to be dropped just enough to bring the

wires through. Unscrew the driver's side or the passenger side sun visor that the fuse box is located on. Disconnect the vanity light by gently pulling the connectors. Pry off the upper and lower pillar trim panel on the same side from which you removed the sun visor with the flathead screwdriver. You may need to remove the seat belt if it is attached to the upper pillar. The seat belt is usually secured with a head or Torx bolt. Remove any screws and retaining clips. Unscrew the kick panel over the fuse box and place the panel to the side.

Cut out the outline on the headliner. Ensure that a support beam runs across the area where you intend to mount the overhead DVD player. If there is no beam, you will need to glue the wood rail to the roof of the vehicle.

Use the bracket to mark at least four drill holes on the wood or support beam. Make sure to drill the holes centered on the beam.

Run the wires that came with the overhead DVD player through the headliner. Leave enough slack to connect to the DVD player. Follow the instructions and use the hardware that came with the overhead DVD player. Some units will require you to connect all wiring to the DVD player before mounting. You will hide the wires behind the panels you removed.

Mount the bracket carefully using the short screws that came with the overhead DVD player. Connect the dome wires to the appropriate wires as described in the instructions that came with the overhead DVD player.

Connect the power and audio wires as detailed in the manufacturer's instructions. All wires must be connected to a 12-volt source except the black one. It must be grounded. You can use any screw to ground the black wire. Use the wire crimper to cut the wires and use the electrical tape to secure wire connections. Place the FM modulator under the seat nearest to where you took off the panels.

Run the audio cable to the FM modulator. Set the modulator at one of the radio signals stated on the modulator. Securely place the wires loosely where the panels will be replaced. Secure all panels, seat belt and headliner back into place.

Tips & Warnings

Do not over tighten the car android dvd player. It could cause the screen to warp.

Installation can take up to four hours or more.

Want more information for the [Latest Android Car DVD](#)

Our online US online store: <http://www.autopumpkin.com/>

UK store: <http://www.autopumpkin.co.uk/>

GE store: <http://www.autopumpkin.de/>

Mstar English User Manual

[mstar user manual En](#)

☐Pumpkin FAQ☐What Should You Do if The Map Settings Can't be Saved

Some guys might meet the map setting issues when using the [aftermarket Android 4.4 car stereo](#), such as the map color and speed alert setting can't be saved and need to reset every time when turning on the stereo. Here's the guidance to help you out:



1. Check if other settings such as radio, date and time can be saved or not. If all these settings can't be saved, then you might have plugged the Red ACC cable and Yellow memory wire (labeled with B+) into the wrong position. Thus, there is no memory and the Android 4.4 car stereo has no data to save. All you need to do is plugging them in the right position and the setting issue will be fixed.
2. If other settings can be saved, then there's something wrong with the map card or the map App. You may need a new SD card and also a new map file (please contact sales@autopumpkin.com for it). After copying the map file into your empty new SD card, you need to insert it into the GPS slot. Then you can save the map setting without any issues.

For more Android car stereos, please visit:

- US Site: <http://www.autopumpkin.com/>

- UK Site: <http://www.autopumpkin.co.uk/>
-